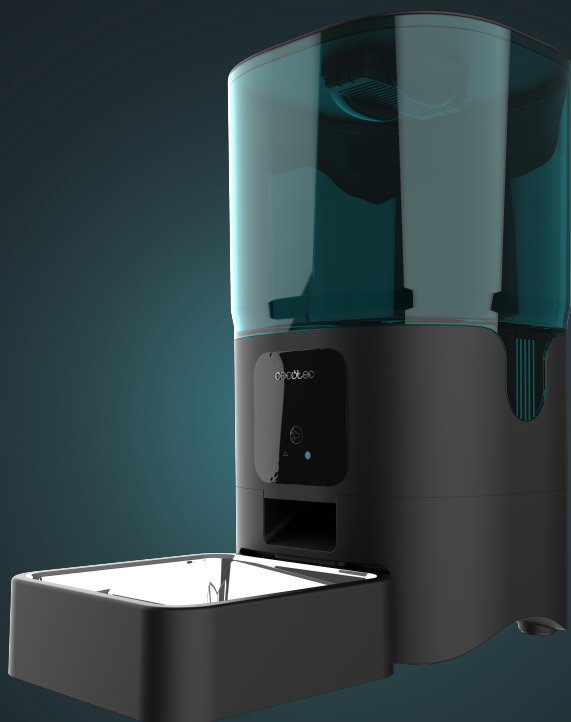


cecotec

PUMBA 6000 PURRFECT MEAL SMART

Comedero automático para mascotas con control wifi/

Automatic pet feeder with Wi-Fi control.



Manual de instrucciones
Instruction manual
Manuel d'instructions
Bedienungsanleitung
Manuale di istruzioni
Manual de instruções
Instrucțiehandleiding
Instrukcja obsługi
Návod k použití

3. PRODUCT ASSEMBLY

1. Plug the appliance into a power supply.

- Open the battery compartment and put 4 AA batteries (not included).
- Plug the appliance into a power supply.
- When the light indicator lights up, the feeder has been switched on.

Fig. 2

1. Battery compartment (4 AA batteries)
 2. Power plug
- This device has a dual power supply (AA batteries and mains connection). Choose the one that suits you best. It is recommended to use batteries as an alternative power source and to connect the device to a power outlet at the same time.
 - If there is a power failure or power outage, the batteries can be used as a backup power source to ensure that your pet receives a continuous supply of food and that meals are dispensed on time.

2. Assembly the product by following the steps below.

Please note

Remove the parts from the feeder and assemble them in order.

- Fig. 3. Adjust the direction of the food dispensing elements as shown in the figures. The food outlet should face backwards. Fig 4.
- Put the plastic bowl inside the stainless-steel bowl.
- Place the lid on the food tank. Fig. 5

3. Add pet food into the tank. Fig. 6

Please note

Do not use canned or wet food. Recommended food size: 5-10 mm. Fig. 7

4. Install the safety lock. Fig. 8

4. OPERATION

Fig. 9

1. Button

- Press the icon once to dispense a food serving manually.
- Press and hold the button (1) for 10 seconds to start Wi-Fi connection.

2. LED indicator

Please note

The appliance is only suitable for 2.4G network connections (it cannot be connected to 5G networks). Make sure to install 4 AA batteries and to plug the device to a power outlet. Place the feeder close to the router. It is recommended to place it at a maximum distance of 6 metres without walls in between.

Blue indicator light	If flashing rapidly	The feeder is in Bluetooth mode ready to connect to the application.
	If flashing slowly	The feeder is connecting to the application.
	If it remains steady	It has successfully connected to Wi-Fi and is ready for use.
Green indicator light	If flashing rapidly	Wi-Fi has been disconnected.
	If it remains steady	Wi-Fi has been disconnected.
Red indicator light	If flashing rapidly	Low battery, connect the adapter to the power socket or replace batteries.

Downloading the application and logging in



1. Scan the QR code or search for the "Cecotec" app in the Apple Store or Google Store to download it.
2. Open the "Cecotec" app on your mobile phone and click on "Register" to create an account. If you already have an account, simply log in.

Please note

Please note that you can only log in to the app from one associated account, but you can use it to connect to multiple devices and use it on multiple phones.

Connecting the feeder to the APP automatically

Follow the instructions in the app to complete the connection process:

1. Activate the Wi-Fi connection and the Bluetooth.
2. Open the "Cecotec" app and log in to your account.
3. Reset Wi-Fi on the device by pressing and holding the reset icon for 3-5 seconds.

- The "Add device" message will appear.
- Press the "Add" option to add the device.
- Enter the Wi-Fi network name and password (remember that only the 2.4Gz network can be selected).
- Wait for the device to connect and tap the "Done" option to enter the control interface.

Connecting the feeder to the APP manually

- Add the feeder to the application: after logging into the application, click on the [+] option in the top right corner to add the feeder, we will go to the "Pet Care" part, look for our product "Pumba 6000 Purrfect Meal Smart". Finally, follow the linking steps.

Please note

Make sure your phone is connected to a Wi-Fi network with optimal network speeds.

Establishing a schedule or meal plan

You can set a daily feeding schedule for your pet.

Please note

The device consumes power very quickly, so it is recommended not to use batteries as the only power source, as the battery will only last about 10 hours.

Tips

- The battery pack is used as a back-up in case of power failure or power failure. Make sure to install 4 AA batteries and to plug the device to a power outlet at the same time.
- It only works with the 2.4Gz network, do not try to connect to the 5Gz network.
- Try placing the device close to the router during connection to ensure a fast connection.

On food portions depending on your pet, breed, size, and type of food, it is advisable to follow the table on the food itself or follow the instructions of a professional.

Warning

Do not use canned or wet food.

Please note

If your pet has not eaten the previously scheduled meal, reduce the dose of the next meal.

5. CLEANING AND MAINTENANCE

Both the feeder and the desiccant bracket can be removed for cleaning.

Use a damp cloth to wipe dirt from inside the feeder and from the dispensing outlet.

Rinse the parts and air dry them thoroughly before putting them back into the appliance.

NOTE: for the sake of your pet's health, it is recommended to clean the feeder regularly.

The washable parts of the feeder are: food tank, stainless steel bowl, plastic bracket, lid (without desiccant bag).

These parts can also be put in the dishwasher or immersed in water.

6. TROUBLESHOOTING

Why can't I connect to Wi-Fi?

Check that you have connected the device correctly and make sure you select the 2.4G Wi-Fi option instead of 5G.

Why doesn't the device dispense food?

- Be sure to fill the tank only with dry food or feed.
- Check if the battery level is low and if the power adapter is connected.

Why are the servings not uniform?

The first servings may vary, but this does not mean that the appliance is defective. After about 6 meals, servings should even out.

	Problem	Possible cause	Solution
1	Feeder does not dispense food	Clogged food in the mechanism	Check for obstructions and clear them.
			Make sure the food is dry and loose.
2	Food spills out of the feeder	Unbalanced or unstable feeder	Place the feeder on a level surface.
			Check if the parts are correctly assembled.
3	Low battery indicator light on	No battery	Replace the batteries with new ones.
			Use quality alkaline batteries.

4	Feeder makes strange noises	Loose or worn parts	Inspect and tighten loose parts.
			Replace worn parts.
5	The feeder does not work	Electrical or electronic problem	Contact Technical Support Service
6	Moist or sticky food	Moisture in the storage area	Place the feeder in a dry place.
			Store the feeder indoors.
		Lid not closed properly	Check that the lid is properly fitted.

7. TECHNICAL SPECIFICATIONS

Product reference: 09565
Product: Pumba 6000 Purrfect Meal Smart
Suitable for: All types of small-medium sized pets
Rated voltage: 5 V 1 A
Product power: 5 W
Power supply: DC adaptor and (X4) "AA" alkaline batteries
Wi-Fi connection: Wi-Fi IEEE 802.11 b/g/n 2.4 GHz
Maximum power transmission: 20 dBm
Appliance capacity: 6 L
Type of food: dry food/feed
Portion sizes: consult feed instructions or a professional

Technical specifications may change without prior notification to improve product quality.
Made in China | Designed in Spain

8. DISPOSAL OF OLD ELECTRICAL AND ELECTRONIC APPLIANCES



This symbol indicates that, according to the applicable regulations, the product and/or batteries must be disposed of separately from household waste. When this product reaches the end of its shelf life, you should dispose of the cells/batteries/accumulators and take them to a

collection point designated by the local authorities.
Consumers must contact their local authorities or retailer for information concerning the correct disposal of old appliances and/or their batteries.
Compliance with the above guidelines will help protecting the environment.


9. TECHNICAL SUPPORT AND WARRANTY

Cecotec shall be liable to the end user or consumer for any lack of conformity that exists at the time of delivery of the product under the terms, conditions, and deadlines established by the applicable regulations.
It is recommended that repairs be carried out by qualified personnel.
If at any moment you detect any problem with your product or have any doubt, do not hesitate to contact the official Cecotec Technical Support Service at +34 963 210 728.

10. COPYRIGHT

The intellectual property rights over the texts in this manual belong to CECOTEC INNOVACIONES, S.L. All rights reserved. The contents of this publication may not, in whole or in part, be reproduced, stored in a retrieval system, transmitted, or distributed by any means (electronic, mechanical, photocopying, recording or similar) without the prior authorization of CECOTEC INNOVACIONES, S.L.

11. DECLARATION OF CONFORMITY

Cecotec Innovaciones hereby declares this pet feeder, model 09565_Pumba 6000 Purrfect Meal Smart, complies with the Directive 2014/53/EU on radio equipment.
 The complete text of the EU declaration of conformity is available in the following Internet address: www.cecotec.es.

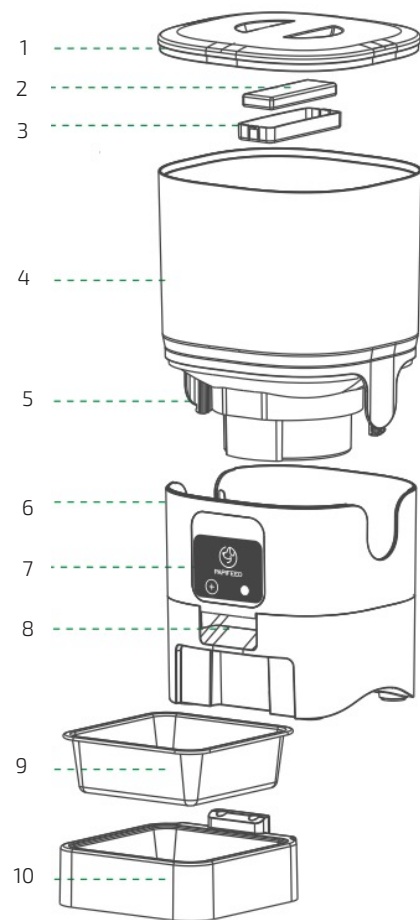


Fig./Img./Abb./Afb./ Rys. 1

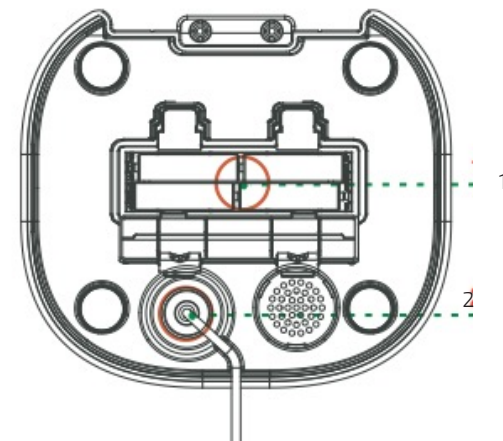


Fig./Img./Abb./Afb./ Rys. 2

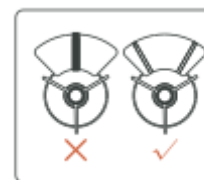


Fig./Img./Abb./Afb./ Rys. 3



Fig./Img./Abb./Afb./ Rys. 4

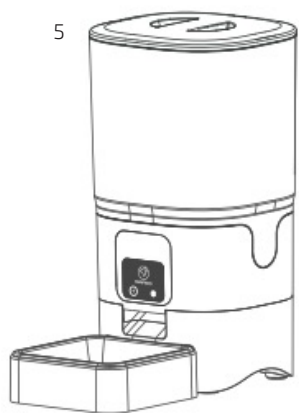


Fig./Img./Abb./Afb./ Rys. 5

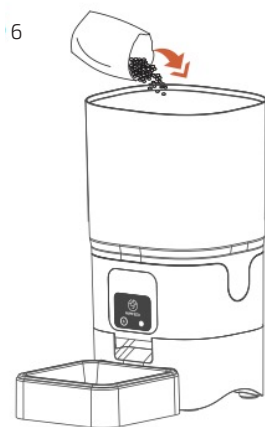


Fig./Img./Abb./Afb./ Rys.6

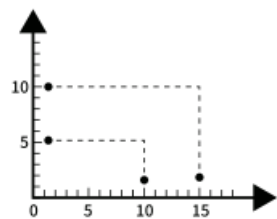


Fig./Img./Abb./Afb./ Rys.7

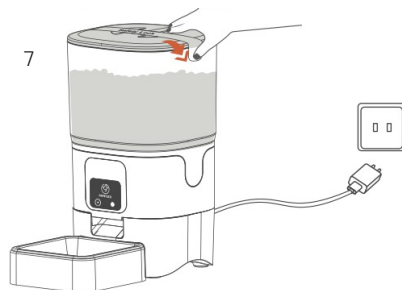


Fig./Img./Abb./Afb./ Rys.8

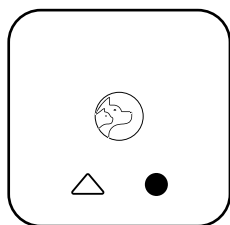


Fig./Img./Abb./Afb./ Rys.9

www.cecotec.es

Cecotec Innovaciones S.L.
Av. Reyes Católicos, 60
46910, Alfafar (Valencia), Spain